



Air motors - M16 Series

Spare parts list

Model	Part number	Series
M16-19500-KL-ATEX	2051478924	B
M16-4800-KL ATEX	2051478934	B
M16-2900-KL ATEX	2051478944	B
M16-1140-KL ATEX	2051478954	B
M16-700-KL ATEX	2051478964	B
MR16-13000-KL-ATEX	2051478974	B
MR16-3400-KL ATEX	2051478984	B
MR16-2000-KL ATEX	2051478994	B
MR16-800-KL ATEX	2051479004	B
MR16-490-KL-ATEX	2051479014	B
M16-19500-KSL ATEX	2051479024	B
M16-4800-KSL ATEX	2051479034	B
M16-2900-KSL ATEX	2051479044	B
M16-1140-KSL ATEX	2051479054	B
M16-700-KSL ATEX	2051479064	B
MR16-13000-KSL ATEX	2051479074	B
MR16-3400-KSL ATEX	2051479084	B
MR16-2000-KSL ATEX	2051479094	B
MR16-800-KSL ATEX	2051479104	B
MR16-490-KSL ATEX	2051479114	B



Table of contents

- GEARBOX	Page 3
- MOTOR	Page 16
- MOUNTING FLANGE	Page 24
- MOUNTING FOOT	Page 28
- SERVICE KIT	Page 30

Find more information and your Desoutter contacts on:

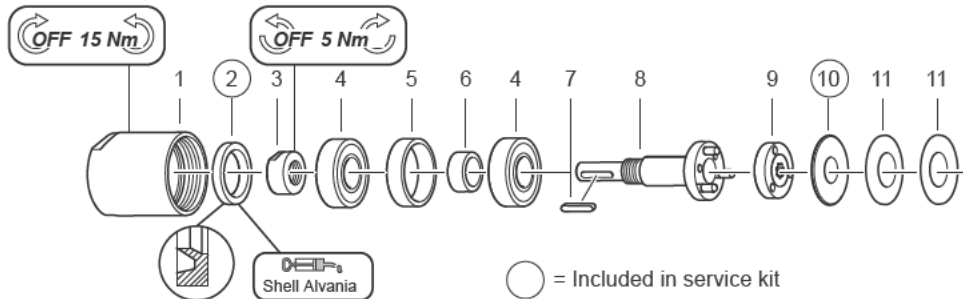
www.desouttertools.com

Software and documentation available at:

<http://resource-center.desouttertools.com>

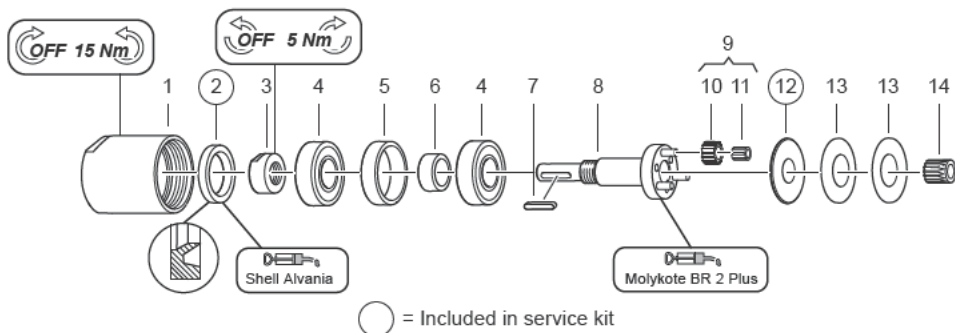
GEARBOX

Gearbox items - M16-19500-KL-ATEX / MR16-13000-KL-ATEX



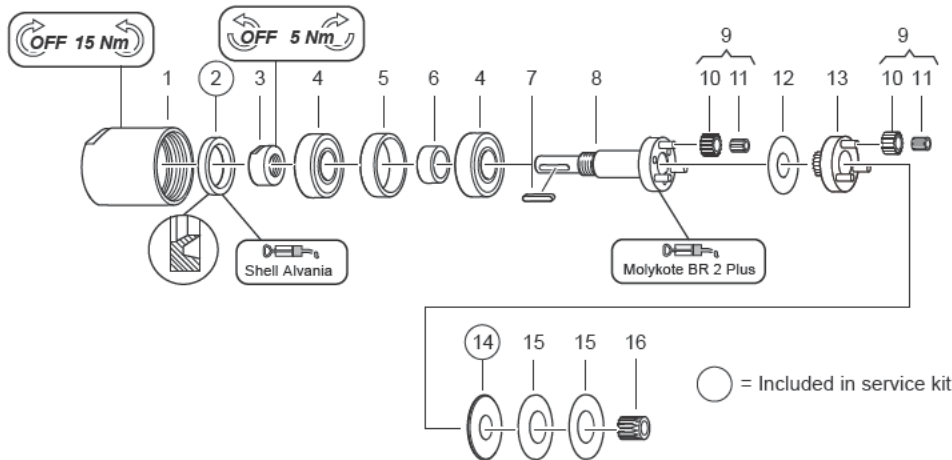
Item	Description	Part number	Qty												Service level													
			M16-19500-KL-ATEX	M16-4800-KL-ATEX	M16-2900-KL-ATEX	M16-1140-KL-ATEX	M16-700-KL-ATEX	MR16-13000-KL-ATEX	MR16-3400-KL-ATEX	MR16-2000-KL-ATEX	MR16-800-KL-ATEX	MR16-490-KL-ATEX	M16-19500-KSL-ATEX	M16-4800-KSL-ATEX	M16-2900-KSL-ATEX	M16-1140-KSL-ATEX	M16-700-KSL-ATEX	MR16-13000-KSL-ATEX	MR16-3400-KSL-ATEX	MR16-2000-KSL-ATEX	MR16-800-KSL-ATEX	MR16-490-KSL-ATEX	High	Medium	Low			
1	FRONT PART	2050536583	1					1																				X
2	SEAL RING	-	1					1																				
3	NUT	2050537273	1					1																				X
4	BALL BEARING	2050535953	2					2																				X
5	SPACER	2050538143	1					1																				X
6	SPACER	2050538153	1					1																				X
7	KEY	450143	1					1																				X
8	PLANETARY SHAFT, COMPL.	2050537833	1					1																				X
9	DRIVER	2050536263	1					1																				X
10	WASHER	-	1					1																				
11	CUP SPRING	2050536143	2					2																				X

Gearbox items - M16-4800-KL ATEX / M16-2900-KL ATEX / MR16-3400-KL ATEX / MR16-2000-KL ATEX



Item	Description	Part number	Qty													Service level												
			M16-19500-KL-ATEX	M16-4800-KL ATEX	M16-2900-KL ATEX	M16-1140-KL ATEX	M16-700-KL ATEX	MR16-13000-KL-ATEX	MR16-3400-KL ATEX	MR16-2000-KL ATEX	MR16-300-KL ATEX	MR16-490-KL-ATEX	M16-19500-KSL ATEX	M16-4800-KSL ATEX	M16-2900-KSL ATEX	M16-1140-KSL ATEX	M16-700-KSL ATEX	MR16-13000-KSL ATEX	MR16-3400-KSL ATEX	MR16-2000-KSL ATEX	MR16-300-KSL ATEX	MR16-490-KSL ATEX	High	Medium	Low			
1	FRONT PART	2050536583	1	1				1	1																		X	
2	SEAL RING	-	1	1				1	1																			
3	NUT	2050537273	1	1				1	1																			X
4	BALL BEARING	2050535953	2	2				2	2																			X
5	SPACER	2050538143	1	1				1	1																			X
6	SPACER	2050538153	1	1				1	1																			X
7	KEY	450143	1	1				1	1																			X
8	PLANETARY SHAFT, COMPL.	2050537833	1					1																				X
8	PLANETARY SHAFT, COMPL.	2050537843		1					1																			X
9	GEAR WHEEL SET	2050536903	1					1																				X
10	GEAR WHEEL	-	3					3																				
11	NEEDLE BEARING	451283	3					3																				X
9	GEAR WHEEL SET	2050536893		1					1																			X
10	GEAR WHEEL	-		3					3																			
11	NEEDLE BEARING	451283		3					3																			X
12	WASHER	-	1	1				1	1																			
13	CUP SPRING	2050536143	2	2				2	2																			X
14	GEAR WHEEL	2050536813	1					1																				X

Gearbox items - M16-1140-KL ATEX / MR16-800-KL ATEX

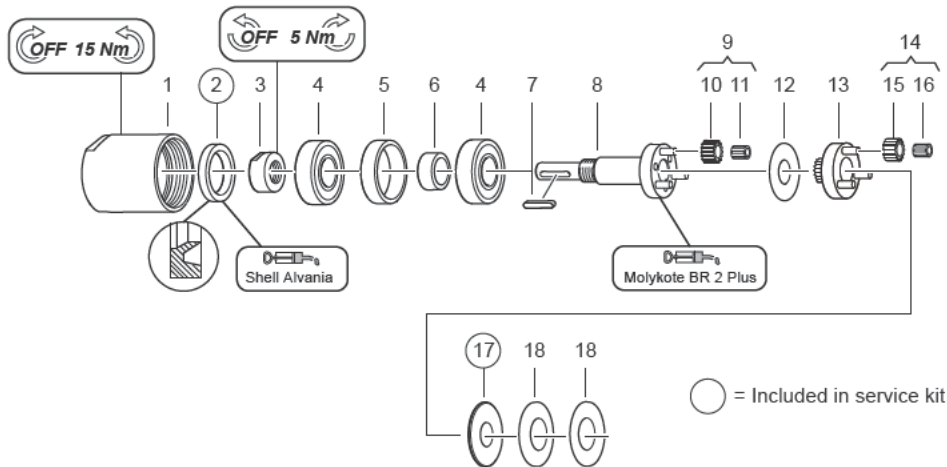


M16-19500-KL-ATEX	M16-4800-KL ATEX	M16-2900-KL ATEX	M16-1140-KL ATEX	M16-700-KL ATEX	MR16-13000-KL-ATEX	MR16-3400-KL ATEX	MR16-2000-KL ATEX	MR16-800-KL ATEX	MR16-490-KL-ATEX	M16-19500-KSL ATEX	M16-4800-KSL ATEX	M16-2900-KSL ATEX	M16-1140-KSL ATEX	M16-700-KSL ATEX	MR16-13000-KSL ATEX	MR16-3400-KSL ATEX	MR16-2000-KSL ATEX	MR16-800-KSL ATEX	MR16-490-KSL ATEX	High	Medium	Low
-------------------	------------------	------------------	------------------	-----------------	--------------------	-------------------	-------------------	------------------	------------------	--------------------	-------------------	-------------------	-------------------	------------------	---------------------	--------------------	--------------------	-------------------	-------------------	------	--------	-----

Item	Description	Part number	Qty																			Service level	
1	FRONT PART	2050536583				1				1													X
2	SEAL RING	-				1				1													
3	NUT	2050537273				1				1													X
4	BALL BEARING	2050535953				2				2													X
5	SPACER	2050538143				1				1													X
6	SPACER	2050538153				1				1													X
7	KEY	450143				1				1													X
8	PLANETARY SHAFT, COMPL.	2050537833				1				1													X
9	GEAR WHEEL SET	2050536903				2				2													X
10	GEAR WHEEL	-				6				6													
11	NEEDLE BEARING	451283				6				6													X
12	WASHER	2050538223				1				1													X

			IM16-19500-KL-ATEX	IM16-4800-KL ATEX	IM16-2900-KL ATEX	IM16-1140-KL ATEX	IM16-700-KL ATEX	MR16-13000-KL-ATEX	MR16-3400-KL ATEX	MR16-2000-KL ATEX	MR16-800-KL ATEX	MR16-490-KL-ATEX	IM16-19500-KSL ATEX	IM16-4800-KSL ATEX	IM16-2900-KSL ATEX	IM16-1140-KSL ATEX	IM16-700-KSL ATEX	MR16-13000-KSL ATEX	MR16-3400-KSL ATEX	MR16-2000-KSL ATEX	MR16-800-KSL ATEX	MR16-490-KSL ATEX	High	Medium	Low	
13	PLANETARY SHAFT, COMPL.	2050537823			1					1																X
14	WASHER	-			1					1																
15	CUP SPRING	2050536143			2					2																X
16	GEAR WHEEL	2050536813			1					1																X

Gearbox items - M16-700-KL ATEX / MR16-490-KL-ATEX

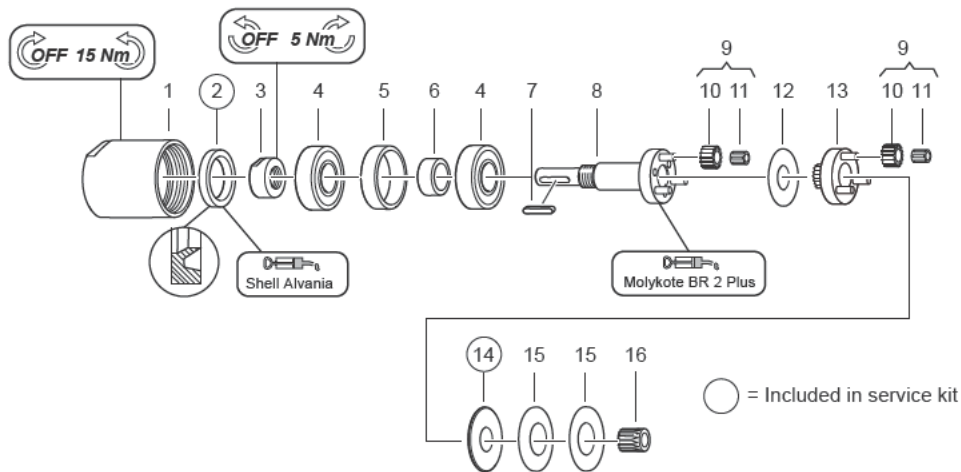


M16-19500-KL-ATEX	M16-4800-KL-ATEX	M16-2900-KL-ATEX	M16-1140-KL-ATEX	M16-700-KL-ATEX	MR16-13000-KL-ATEX	MR16-3400-KL-ATEX	MR16-2000-KL-ATEX	MR16-800-KL-ATEX	MR16-490-KL-ATEX	M16-19500-KSL-ATEX	M16-4800-KSL-ATEX	M16-2900-KSL-ATEX	M16-1140-KSL-ATEX	M16-700-KSL-ATEX	MR16-13000-KSL-ATEX	MR16-3400-KSL-ATEX	MR16-2000-KSL-ATEX	MR16-800-KSL-ATEX	MR16-490-KSL-ATEX	High	Medium	Low
-------------------	------------------	------------------	------------------	-----------------	--------------------	-------------------	-------------------	------------------	------------------	--------------------	-------------------	-------------------	-------------------	------------------	---------------------	--------------------	--------------------	-------------------	-------------------	------	--------	-----

Item	Description	Part number	Qty																	Service level				
1	FRONT PART	2050536583																						X
2	SEAL RING	-																						
3	NUT	2050537273																						X
4	BALL BEARING	2050535953																						X
5	SPACER	2050538143																						X
6	SPACER	2050538153																						X
7	KEY	450143																						X
8	PLANETARY SHAFT, COMPL.	2050537833																						X
9	GEAR WHEEL SET	2050536903																						X
10	GEAR WHEEL	-																						
11	NEEDLE BEARING	451283																						X
12	WASHER	2050538223																						X

			IM16-19500-KL-ATEX	IM16-4800-KL-ATEX	IM16-2900-KL-ATEX	IM16-1140-KL-ATEX	IM16-700-KL-ATEX	MR16-13000-KL-ATEX	MR16-3400-KL-ATEX	MR16-2000-KL-ATEX	MR16-800-KL-ATEX	MR16-490-KL-ATEX	IM16-19500-KSL-ATEX	IM16-4800-KSL-ATEX	IM16-2900-KSL-ATEX	IM16-1140-KSL-ATEX	IM16-700-KSL-ATEX	MR16-13000-KSL-ATEX	MR16-3400-KSL-ATEX	MR16-2000-KSL-ATEX	MR16-800-KSL-ATEX	MR16-490-KSL-ATEX	High	Medium	Low		
13	PLANETARY SHAFT, COMPL.	2050537813					1					1														X	
14	GEAR WHEEL SET	2050536893					1					1															X
	15 GEAR WHEEL	-					3					3															
	16 NEEDLE BEARING	451283					3					3															X
17	WASHER	-					1					1															
18	CUP SPRING	2050536143					2					2															X

Gearbox items - M16-1140-KSL ATEX / MR16-800-KSL ATEX

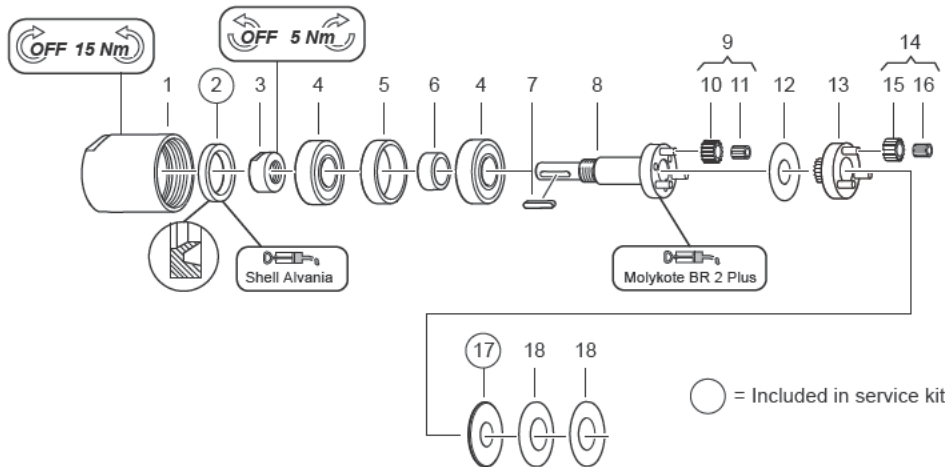


M16-19500-KL-ATEX	M16-4800-KL ATEX	M16-2900-KL ATEX	M16-1140-KL ATEX	M16-700-KL ATEX	MR16-13000-KL-ATEX	MR16-3400-KL ATEX	MR16-2000-KL ATEX	MR16-800-KL ATEX	MR16-490-KL-ATEX	M16-19500-KSL ATEX	M16-2900-KSL ATEX	M16-1140-KSL ATEX	M16-700-KSL ATEX	MR16-13000-KSL ATEX	MR16-3400-KSL ATEX	MR16-2000-KSL ATEX	MR16-800-KSL ATEX	MR16-490-KSL ATEX	High	Medium	Low
-------------------	------------------	------------------	------------------	-----------------	--------------------	-------------------	-------------------	------------------	------------------	--------------------	-------------------	-------------------	------------------	---------------------	--------------------	--------------------	-------------------	-------------------	------	--------	-----

Item	Description	Part number	Qty														Service level					
1	FRONT PART	2050536613											1				1					X
2	SEAL RING	-											2				2					
3	NUT	2050537303											1				1					X
4	BALL BEARING	2050535953											2				2					X
5	SPACER	2050538143											1				1					X
6	SPACER	2050538153											1				1					X
7	KEY	2050536933											1				1					X
8	PLANETARY SHAFT, COMPL.	2050537853											1				1					X
9	GEAR WHEEL SET	2050536903											2				2					X
10	GEAR WHEEL	-											6				6					
11	NEEDLE BEARING	451283											6				6					X
12	WASHER	2050538223											1				1					X

			M16-19500-KL-ATEX	M16-4800-KL ATEX	M16-2900-KL ATEX	M16-1140-KL ATEX	M16-700-KL ATEX	MR16-13000-KL-ATEX	MR16-3400-KL ATEX	MR16-2000-KL ATEX	MR16-800-KL ATEX	MR16-490-KL-ATEX	M16-19500-KSL ATEX	M16-4800-KSL ATEX	M16-2900-KSL ATEX	M16-1140-KSL ATEX	M16-700-KSL ATEX	MR16-13000-KSL ATEX	MR16-3400-KSL ATEX	MR16-2000-KSL ATEX	MR16-800-KSL ATEX	MR16-490-KSL ATEX	High	Medium	Low	
13	PLANETARY SHAFT, COMPL.	2050537823														1						1				X
14	WASHER	-														1						1				
15	CUP SPRING	2050536143														2						2				X
16	GEAR WHEEL	2050536813														1						1				X

Gearbox items - M16-700-KSL ATEX / MR16-490-KSL ATEX



M16-19500-KL-ATEX	M16-4800-KL-ATEX	M16-2900-KL-ATEX	M16-1140-KL-ATEX	M16-700-KL-ATEX	MR16-13000-KL-ATEX	MR16-3400-KL-ATEX	MR16-2000-KL-ATEX	MR16-800-KL-ATEX	MR16-490-KL-ATEX	M16-19500-KSL-ATEX	M16-4800-KSL-ATEX	M16-2900-KSL-ATEX	M16-1140-KSL-ATEX	M16-700-KSL-ATEX	MR16-13000-KSL-ATEX	MR16-3400-KSL-ATEX	MR16-2000-KSL-ATEX	MR16-800-KSL-ATEX	MR16-490-KSL-ATEX	High	Medium	Low
-------------------	------------------	------------------	------------------	-----------------	--------------------	-------------------	-------------------	------------------	------------------	--------------------	-------------------	-------------------	-------------------	------------------	---------------------	--------------------	--------------------	-------------------	-------------------	------	--------	-----

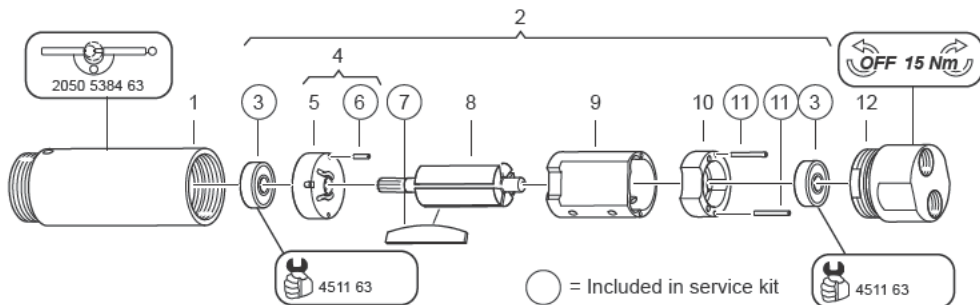
Item	Description	Part number	Qty													Service level						
1	FRONT PART	2050536613													1				1			X
2	SEAL RING	-													2				2			
3	NUT	2050537303													1				1			X
4	BALL BEARING	2050535953													2				2			X
5	SPACER	2050538143													1				1			X
6	SPACER	2050538153													1				1			X
7	KEY	2050536933													1				1			X
8	PLANETARY SHAFT, COMPL.	2050537853													1				1			X
9	GEAR WHEEL SET	2050536903													1				1			X
10	GEAR WHEEL	-													3				3			
11	NEEDLE BEARING	451283													3				3			X
12	WASHER	2050538223													1				1			X

			IM16-19500-KL-ATEX	IM16-4800-KL ATEX	IM16-2900-KL ATEX	IM16-1140-KL ATEX	IM16-700-KL ATEX	MR16-13000-KL-ATEX	MR16-3400-KL ATEX	MR16-2000-KL ATEX	MR16-800-KL ATEX	MR16-490-KL-ATEX	IM16-19500-KSL ATEX	IM16-4800-KSL ATEX	IM16-2900-KSL ATEX	IM16-1140-KSL ATEX	IM16-700-KSL ATEX	MR16-13000-KSL ATEX	MR16-3400-KSL ATEX	MR16-2000-KSL ATEX	MR16-800-KSL ATEX	MR16-490-KSL ATEX	High	Medium	Low	
13	PLANETARY SHAFT, COMPL.	2050537813															1					1				X
14	GEAR WHEEL SET	2050536893															1					1				X
	15 GEAR WHEEL	-															3					3				
	16 NEEDLE BEARING	451283															3					3				X
17	WASHER	-															1					1				
18	CUP SPRING	2050536143															2					2				X

MOTOR

Motor items

M16-19500-KL-ATEX / M16-4800-KL ATEX / M16-2900-KL ATEX / M16-1140-KL ATEX / M16-700-KL ATEX

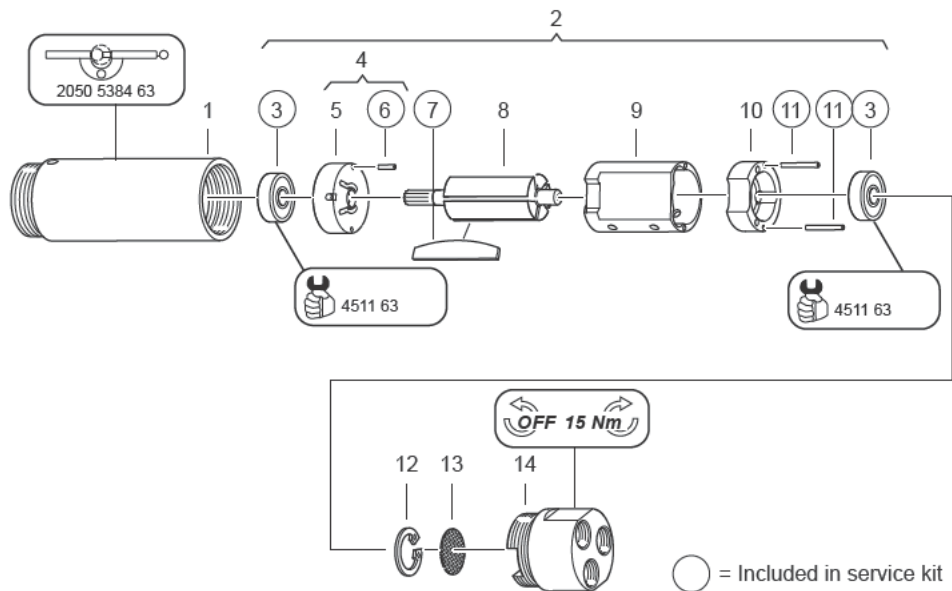


	M16-19500-KL-ATEX	M16-4800-KL ATEX	M16-2900-KL ATEX	M16-1140-KL ATEX	M16-700-KL ATEX	MR16-13000-KL-ATEX	MR16-3400-KL ATEX	MR16-2000-KL ATEX	MR16-800-KL ATEX	MR16-490-KL-ATEX	M16-19500-KSL ATEX	M16-4800-KSL ATEX	M16-2900-KSL ATEX	M16-1140-KSL ATEX	M16-700-KSL ATEX	MR16-13000-KSL ATEX	MR16-3400-KSL ATEX	MR16-2000-KSL ATEX	MR16-800-KSL ATEX	MR16-490-KSL ATEX	High	Medium	Low
--	-------------------	------------------	------------------	------------------	-----------------	--------------------	-------------------	-------------------	------------------	------------------	--------------------	-------------------	-------------------	-------------------	------------------	---------------------	--------------------	--------------------	-------------------	-------------------	------	--------	-----

Item	Description	Part number	Qty																			Service level	
1	MOTOR CASING	2050537043	1	1	1	1	1																X
2	MOTOR COMPLETE	2050537173	1	1	1	1	1																X
3	BALL BEARING	-	2	2	2	2	2																
4	END PLATE, COMPL.	2050536363	1	1	1	1	1																X
	5 END PLATE	-	1	1	1	1	1																
	6 PIN	-	1	1	1	1	1																
	7 VANE	-	5	5	5	5	5																
	8 ROTOR	2050537913	1	1	1	1	1																X
	9 CYLINDER	2050536213	1	1	1	1	1																X
	10 END PLATE	2050540453	1	1	1	1	1																X
	11 PIN	-	2	2	2	2	2																
12	BACK HEAD	2050535803	1	1	1	1	1																X
-	MANDREL	451163	1	1	1	1	1																X
-	WRENCH	2050538463	1	1	1	1	1																X

Motor items

MR16-13000-KL-ATEX / MR16-3400-KL ATEX / MR16-2000-KL ATEX / MR16-800-KL ATEX / MR16-490-KL-ATEX

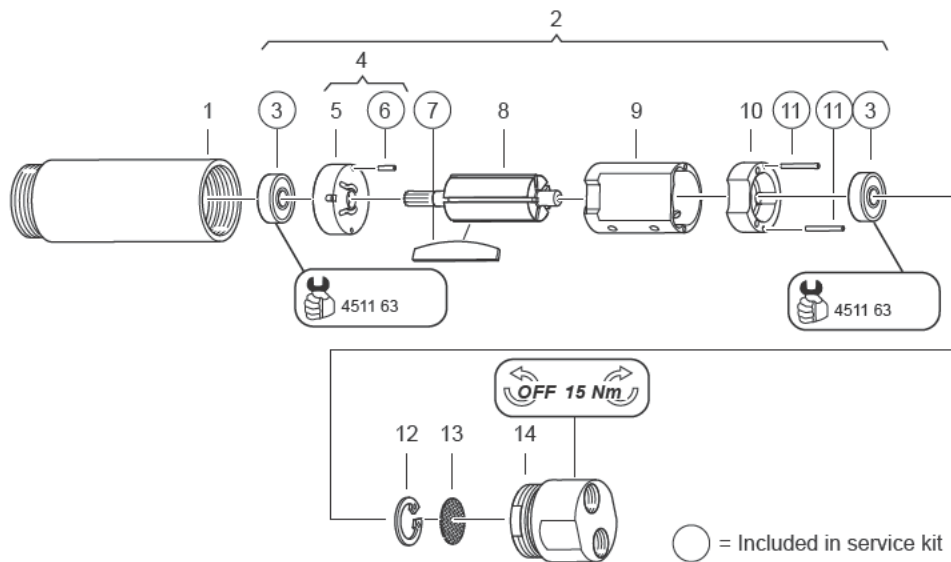


blank page

Motor items

MR16-13000-KSL ATEX / MR16-3400-KSL ATEX / MR16-2000-KSL ATEX / MR16-800-KSL ATEX

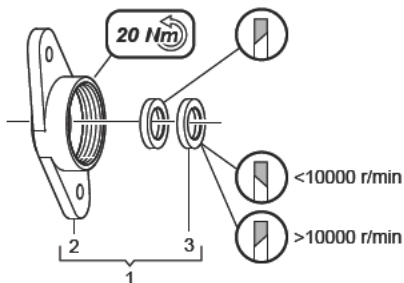
MR16-490-KSL ATEX



Item	Description	Part number	MI16-19500-KL-ATEX	MI16-4800-KL-ATEX	MI16-2900-KL-ATEX	MI16-1140-KL-ATEX	MI16-700-KL-ATEX	MR16-13000-KL-ATEX	MR16-3400-KL-ATEX	MR16-2000-KL-ATEX	MR16-800-KL-ATEX	MR16-490-KL-ATEX	MI16-19500-KSL-ATEX	MI16-4800-KSL-ATEX	MI16-2900-KSL-ATEX	MI16-1140-KSL-ATEX	MI16-700-KSL-ATEX	MR16-13000-KSL-ATEX	MR16-3400-KSL-ATEX	MR16-2000-KSL-ATEX	MR16-800-KSL-ATEX	MR16-490-KSL-ATEX	High	Medium	Low	
			Qty																					Service level		
1	MOTOR CASING	2050537043																	1	1	1	1	1			X
2	MOTOR COMPLETE	2050537183																	1	1	1	1	1			X
3	BALL BEARING	-																	2	2	2	2	2			
4	END PLATE, COMPL.	2050536363																	1	1	1	1	1			X
5	END PLATE	-																	1	1	1	1	1			
6	PIN	-																	1	1	1	1	1			
7	VANE	-																	5	5	5	5	5			
8	ROTOR	2050537913																	1	1	1	1	1			X
9	CYLINDER	2050536223																	1	1	1	1	1			X
10	END PLATE	2050540453																	1	1	1	1	1			X
11	PIN	-																	2	2	2	2	2			
12	CIRCLIP	2050536073																	1	1	1	1	1			X
13	SILENCER	2050538123																	1	1	1	1	1			X
14	BACK HEAD	2050535803																	1	1	1	1	1			X
-	MANDREL	451163																	1	1	1	1	1			

MOUNTING FLANGE

Mounting flange items - M16 / MR16 KSL

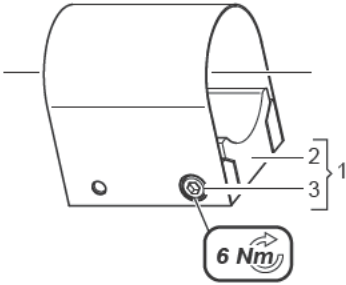


Item	Description	Part number	M16-19500-KL-ATEX	M16-4800-KL-ATEX	M16-2900-KL-ATEX	M16-1140-KL-ATEX	M16-700-KL-ATEX	MR16-13000-KL-ATEX	MR16-3400-KL-ATEX	MR16-2000-KL-ATEX	MR16-800-KL-ATEX	MR16-490-KL-ATEX	M16-19500-KSL-ATEX	M16-4800-KSL-ATEX	M16-2900-KSL-ATEX	M16-1140-KSL-ATEX	M16-700-KSL-ATEX	MR16-13000-KSL-ATEX	MR16-3400-KSL-ATEX	MR16-2000-KSL-ATEX	MR16-800-KSL-ATEX	MR16-490-KSL-ATEX	High	Medium	Low	
			Qty																					Service level		
1	MOUNTING FLANGE M16 / MR16 KSL	2050536453											1	1	1	1	1	1	1	1	1	1				X
2	FLANGE	-											1	1	1	1	1	1	1	1	1	1				
3	SEAL RING	-											2	2	2	2	2	2	2	2	2	2				

blank page

MOUNTING FOOT

Mounting foot items - M16 / MR16 KL / M16 / MR16 KSL



Item	Description	Part number	Qty													Service level										
			M16-19500-KL-ATEX	M16-4800-KL ATEX	M16-2900-KL ATEX	M16-1140-KL ATEX	M16-700-KL ATEX	MR16-13000-KL-ATEX	MR16-3400-KL ATEX	MR16-2000-KL ATEX	MR16-800-KL ATEX	MR16-490-KL-ATEX	M16-19500-KSL ATEX	M16-4800-KSL ATEX	M16-2900-KSL ATEX	M16-1140-KSL ATEX	M16-700-KSL ATEX	MR16-13000-KSL ATEX	MR16-3400-KSL ATEX	MR16-2000-KSL ATEX	MR16-800-KSL ATEX	MR16-490-KSL ATEX	High	Medium	Low	
1	MOUNTING FOOT M16 / MR16 KL	2050536493	1	1	1	1	1	1	1	1	1															X
2	FOOT	-	1	1	1	1	1	1	1	1	1															
3	SCREW	2050537943	2	2	2	2	2	2	2	2	2															X
1	MOUNTING FOOT M16 / MR16 KSL	2050536533										1	1	1	1	1	1	1	1	1	1	1				X
2	FOOT	-										1	1	1	1	1	1	1	1	1	1	1				
3	SCREW	2050538023										2	2	2	2	2	2	2	2	2	2	2				X

SERVICE KIT

Service kit - M16 Series

Item	Description	Part number	Qty																	Service level							
			M16-19500-KL-ATEX	M16-4800-KL ATEX	M16-2900-KL ATEX	M16-1140-KL ATEX	M16-700-KL ATEX	MR16-13000-KL-ATEX	MR16-3400-KL ATEX	MR16-2000-KL ATEX	MR16-800-KL-ATEX	MR16-490-KL-ATEX	M16-19500-KSL ATEX	M16-4800-KSL ATEX	M16-2900-KSL ATEX	M16-1140-KSL ATEX	M16-700-KSL ATEX	MR16-13000-KSL ATEX	MR16-3400-KSL ATEX	MR16-2000-KSL ATEX	MR16-800-KSL ATEX	MR16-490-KSL ATEX	High	Medium	Low		
0	SERVICE KIT M16 SERIES	2050538303	1	1	1	1	1	1	1	1	1	1	1	1	1	1	1	1	1	1	1	1	1	X			
1	SEAL RING	2050538073	2	2	2	2	2	2	2	2	2	2	2	2	2	2	2	2	2	2	2	2	2	2	X		
2	WASHER	2050538213	1	1	1	1	1	1	1	1	1	1	1	1	1	1	1	1	1	1	1	1	1	1	X		
3	BALL BEARING	2050535913	2	2	2	2	2	2	2	2	2	2	2	2	2	2	2	2	2	2	2	2	2	2	X		
4	PIN	-	1	1	1	1	1	1	1	1	1	1	1	1	1	1	1	1	1	1	1	1	1	1			
5	VANE	-	5	5	5	5	5	5	5	5	5	5	5	5	5	5	5	5	5	5	5	5	5	5			
6	PIN	2050540353	2	2	2	2	2	2	2	2	2	2	2	2	2	2	2	2	2	2	2	2	2	2	X		

To Buy Desoutter Products Online visit AirToolPro.com

Brought To You By Zampini Industrial Group - Factory Distribution Since 1987 - 1-800-353-4676

More Than Productivity



www.desouttertools.com

© Copyright 2017